

REVIEWED
By Britany Wylie at 10:47 am, Jun 11, 2019

REVIEWED
By Anne Nord at 8:12 am, Jun 14, 2019

6/7/2019

cg

Worklist: 3453

<u>LAB_CASE</u>	<u>ITEM</u>	<u>TASK_ID</u>	<u>DESCRIPTION</u>	
C2019-0656	1	153965	AM 3 Urine Carboxy-THC	
M2019-1973	4	153966	AM 3 Urine Carboxy-THC	
P2019-1279	1	153967	AM 3 Urine Carboxy-THC	
P2019-1280	1	153968	AM 3 Urine Carboxy-THC	
P2019-1311	1	153969	AM 3 Urine Carboxy-THC	
P2019-1312	1	153970	AM 3 Urine Carboxy-THC	
P2019-1322	1	153971	AM 3 Urine Carboxy-THC	
P2019-1323	1	153972	AM 3 Urine Carboxy-THC	
P2019-1395	1	153973	AM 3 Urine Carboxy-THC	
P2019-1396	1	153974	AM 3 Urine Carboxy-THC	
P2019-1469	1	153975	AM 3 Urine Carboxy-THC	
P2019-1502	1	153976	AM 3 Urine Carboxy-THC	

The samples were extracted and the sequence was started on 06/07/19 (Friday). It stopped over the weekend and was restarted on the following Monday (06/10/19).

cg

Data Path : G:\TOX\Pocatello\MMS\CDS\2019\am 3 worklist 3453\
Data File : THC-NC.D
Acq On : 07 Jun 2019 16:27
Operator : ISP\datastor
Sample : Negative Control
Misc : Lot # POC031319; AM #3 Worklist 3453
ALS Vial : 31 Sample Multiplier: 1

Integration Parameters: events.e
Integrator: ChemStation

Method : C:\gcms\1\methods\TOX.M
Title :

Signal : EIC Ion 371.00 (370.70 to 371.70): THC-NC.D\data.ms

peak #	R.T. min	first scan	max scan	last scan	PK TY	peak height	corr. area	corr. % max.	% of total
1	5.396	100	108	115	PV	37	500	11.66%	2.075%
2	5.429	115	120	132	VV 2	50	762	17.75%	3.158%
3	6.165	349	375	378	PV 2	66	1057	24.63%	4.381%
4	6.180	378	380	396	VB	68	983	22.91%	4.075%
5	6.275	398	414	420	BV 3	28	439	10.23%	1.820%
6	6.298	420	422	433	VV	35	472	11.00%	1.956%
7	6.424	446	465	467	PV	59	1057	24.64%	4.383%
8	6.433	467	469	479	VB	56	598	13.93%	2.479%
9	6.532	479	503	504	BV	49	852	19.86%	3.533%
10	6.544	504	507	514	VV	54	727	16.94%	3.013%
11	6.602	514	527	550	VV	118	3394	79.12%	14.073%
12	6.798	573	595	609	PV	98	2657	61.94%	11.018%
13	6.863	609	618	627	VV 3	27	447	10.43%	1.855%
14	6.928	632	641	651	BV 2	51	944	22.01%	3.915%
15	6.998	651	665	672	VV 2	94	2127	49.57%	8.818%
16	7.054	672	684	700	VV	185	4290	100.00%	17.788%
17	7.210	722	738	744	PV	66	1340	31.23%	5.555%
18	7.243	744	750	762	VB	73	1472	34.32%	6.105%

Sum of corrected areas: 24118

Signal : EIC Ion 473.00 (472.70 to 473.70): THC-NC.D\data.ms

peak #	R.T. min	first scan	max scan	last scan	PK TY	peak height	corr. area	corr. % max.	% of total
--------	----------	------------	----------	-----------	-------	-------------	------------	--------------	------------

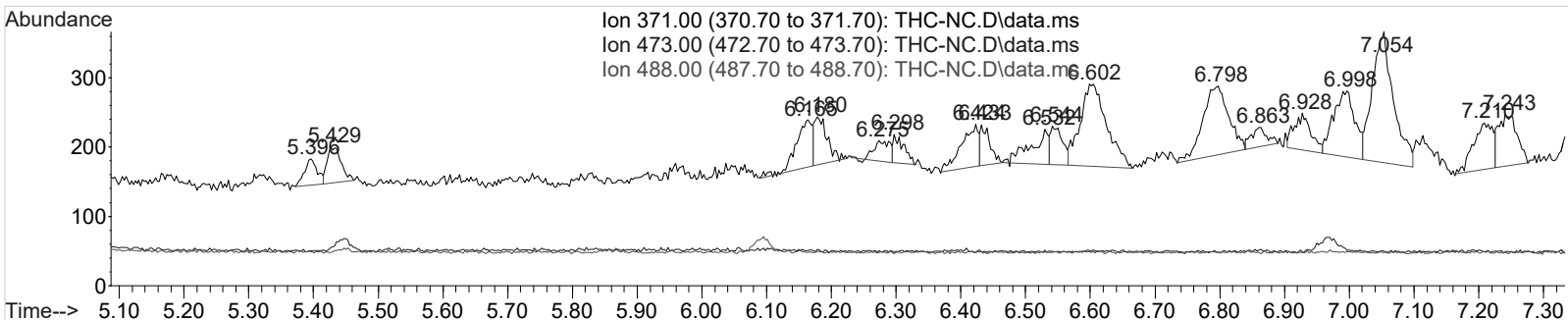
No peaks were detected using the method integration parameters!

Signal : EIC Ion 488.00 (487.70 to 488.70): THC-NC.D\data.ms

peak #	R.T. min	first scan	max scan	last scan	PK TY	peak height	corr. area	corr. % max.	% of total
--------	----------	------------	----------	-----------	-------	-------------	------------	--------------	------------

No peaks were detected using the method integration parameters!

TOX.M Mon Jun 10 14:31:29 2019



Data Path : G:\TOX\Pocatello\MMS\CDS\2019\am 3 worklist 3453\
 Data File : THC-PC1.D
 Acq On : 07 Jun 2019 16:38
 Operator : ISP\datastor
 Sample : Spiked Positive c-THC Control
 Misc : c-THC lot # 0497429 in Negative Lot # POC031319; Worklist 3453
 ALS Vial : 32 Sample Multiplier: 1

Integration Parameters: events.e
 Integrator: ChemStation

Method : C:\gcms\1\methods\TOX.M
 Title :

Signal : EIC Ion 371.00 (370.70 to 371.70): THC-PC1.D\data.ms

peak #	R.T. min	first scan	max scan	last scan	PK TY	peak height	corr. area	corr. % max.	% of total
1	5.166	21	29	43	PV	93	1858	0.61%	0.338%
2	5.303	62	76	90	PV	130	3174	1.04%	0.578%
3	5.394	90	108	114	VV	325	5145	1.69%	0.937%
4	5.430	114	120	140	VV 2	422	7925	2.61%	1.444%
5	5.523	140	153	158	VV 2	52	1164	0.38%	0.212%
6	5.549	158	161	172	VV	63	1094	0.36%	0.199%
7	5.609	172	182	197	VV	80	2559	0.84%	0.466%
8	5.659	197	200	204	VV	52	493	0.16%	0.090%
9	5.735	211	226	239	VV	94	3074	1.01%	0.560%
10	5.825	239	257	277	VV 2	90	3127	1.03%	0.570%
11	5.912	277	287	296	VV	99	2233	0.73%	0.407%
12	5.961	296	305	318	VV	167	4051	1.33%	0.738%
13	6.004	318	319	322	VV 3	76	551	0.18%	0.100%
14	6.052	322	336	339	VV	142	3382	1.11%	0.616%
15	6.063	339	340	347	VV 2	126	1557	0.51%	0.284%
16	6.220	347	394	443	VV	14541	304105	100.00%	55.415%
17	6.422	443	465	479	VV	499	19373	6.37%	3.530%
18	6.499	479	491	496	VV	303	7311	2.40%	1.332%
19	6.539	496	505	514	VV	455	12408	4.08%	2.261%
20	6.600	514	526	552	VV	841	28197	9.27%	5.138%
21	6.717	552	567	575	VV 2	236	7602	2.50%	1.385%
22	6.792	575	593	608	VV	792	27507	9.05%	5.012%
23	6.861	608	617	628	VV 2	416	12352	4.06%	2.251%
24	6.927	628	640	650	VV	501	14854	4.88%	2.707%
25	6.987	650	661	671	VV 2	729	19088	6.28%	3.478%
26	7.046	671	681	698	VV	1111	29647	9.75%	5.402%
27	7.114	698	705	721	VV	279	7037	2.31%	1.282%
28	7.212	721	739	742	PV	384	7757	2.55%	1.413%
29	7.246	742	751	763	VV	437	9739	3.20%	1.775%
30	7.297	763	769	772	VV 2	32	415	0.14%	0.076%

Sum of corrected areas: 548781
 Signal : EIC Ion 473.00 (472.70 to 473.70): THC-PC1.D\data.ms

peak #	R.T. min	first scan	max scan	last scan	PK TY	peak height	corr. area	corr. % max.	% of total
1	5.443	110	125	139	BB 2	100	1450	1.45%	1.324%
2	6.220	377	395	444	BV	5643	99699	100.00%	91.069%
3	6.857	601	616	627	BB 2	26	429	0.43%	0.391%
4	6.965	634	653	672	PV 2	382	7899	7.92%	7.215%

Sum of corrected areas: 109477
 Signal : EIC Ion 488.00 (487.70 to 488.70): THC-PC1.D\data.ms

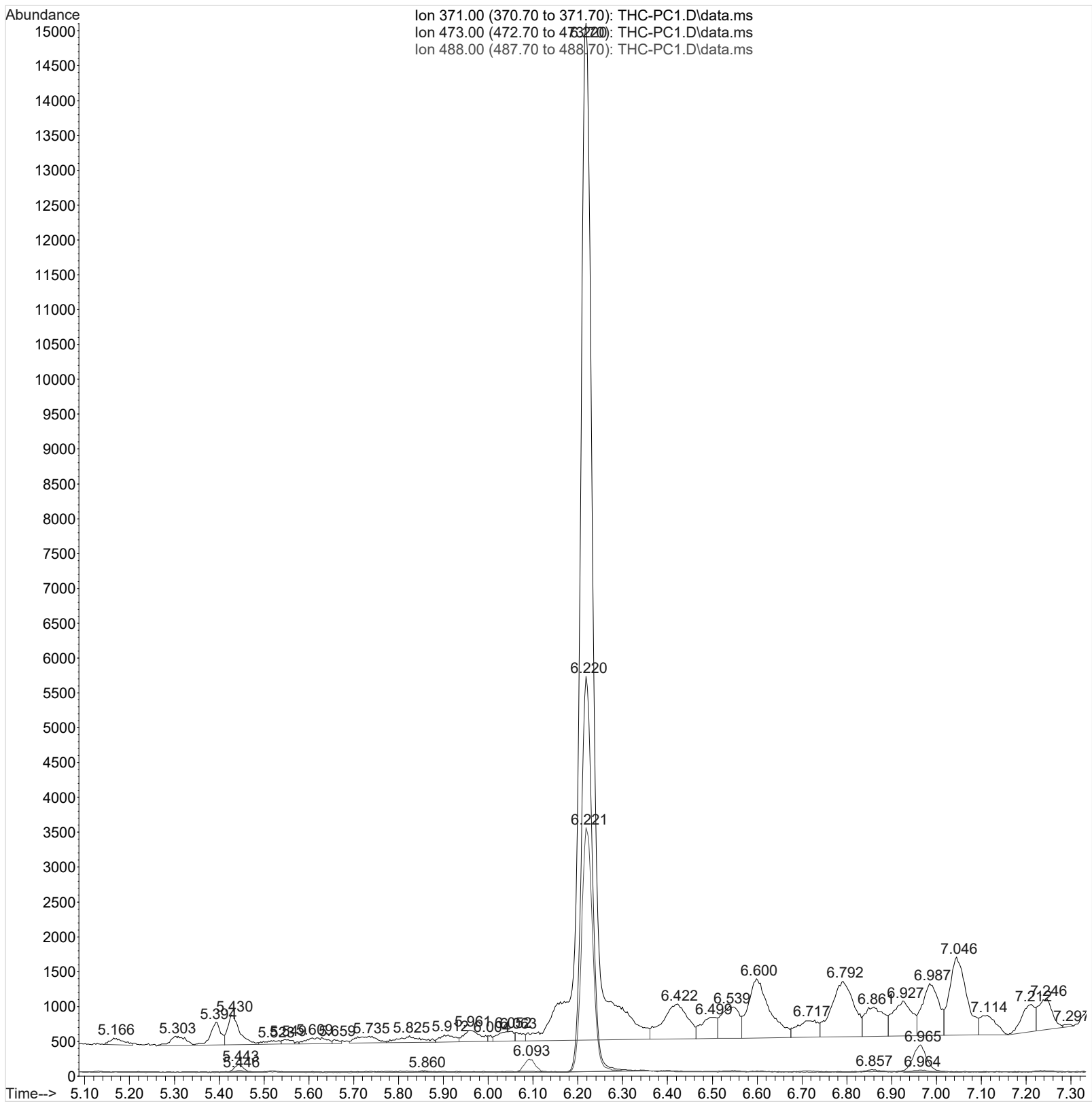
peak #	R.T. min	first scan	max scan	last scan	PK TY	peak height	corr. area	corr. % max.	% of total
--------	----------	------------	----------	-----------	-------	-------------	------------	--------------	------------

CS

#	min	scan	scan	scan	TY	height	area	% max.	total
1	5.446	116	126	136	PB 2	28	405	0.66%	0.610%
2	5.860	239	269	279	BB 3	27	498	0.81%	0.751%
3	6.093	329	350	372	BV	186	3387	5.52%	5.104%
4	6.221	372	395	424	PV	3445	61409	100.00%	92.530%
5	6.964	640	653	668	BV 2	31	668	1.09%	1.006%

Sum of corrected areas: 66367

TOX.M Mon Jun 10 14:30:00 2019



Data Path : G:\TOX\Pocatello\MMS\CDS\2019\am 3 worklist 3453\
 Data File : THC-PC2.D
 Acq On : 10 Jun 2019 12:17
 Operator : ISP\datastor
 Sample : Spiked Positive c-THC Control
 Misc : c-THC lot # 0497429 in Negative Lot # POC031319; Worklist 3453
 ALS Vial : 32 Sample Multiplier: 1

Integration Parameters: events.e
 Integrator: ChemStation

Method : C:\gcms\1\methods\TOX.M
 Title :

Signal : EIC Ion 371.00 (370.70 to 371.70): THC-PC2.D\data.ms

peak #	R.T. min	first scan	max scan	last scan	PK TY	peak height	corr. area	corr. % max.	% of total
1	5.185	20	35	42	PV	209	4507	0.69%	0.373%
2	5.209	42	43	45	VV	150	826	0.13%	0.068%
3	5.228	45	50	60	VV 2	155	3143	0.48%	0.260%
4	5.300	60	75	95	VV	331	10028	1.53%	0.830%
5	5.392	95	107	113	VV	605	9123	1.39%	0.755%
6	5.430	113	120	139	VV	965	15400	2.35%	1.274%
7	5.515	139	150	155	PV 3	87	1463	0.22%	0.121%
8	5.544	155	160	170	VV 2	108	2144	0.33%	0.177%
9	5.608	170	182	187	VV	236	3995	0.61%	0.331%
10	5.626	187	188	190	VV 2	164	765	0.12%	0.063%
11	5.637	190	192	195	VV 3	160	1345	0.20%	0.111%
12	5.650	195	197	199	VV 3	120	687	0.10%	0.057%
13	5.737	203	227	237	VV	240	10448	1.59%	0.864%
14	5.819	237	255	257	VV 3	369	7651	1.17%	0.633%
15	5.836	257	261	262	VV	402	3903	0.59%	0.323%
16	5.846	262	264	275	VV 2	451	8513	1.30%	0.704%
17	5.904	275	285	296	VV	437	13571	2.07%	1.123%
18	5.966	296	306	315	VV	470	12083	1.84%	1.000%
19	6.031	315	329	330	VV 3	354	7881	1.20%	0.652%
20	6.061	330	339	345	VV 2	406	9510	1.45%	0.787%
21	6.088	345	349	351	VV 2	359	3706	0.56%	0.307%
22	6.100	351	353	358	VV	343	3793	0.58%	0.314%
23	6.162	358	374	379	VV	1149	28678	4.37%	2.373%
24	6.218	379	394	438	VV	34750	656600	100.00%	54.322%
25	6.421	443	464	479	VV	944	37283	5.68%	3.085%
26	6.498	479	491	495	VV	666	14184	2.16%	1.173%
27	6.545	495	507	515	VV	895	25325	3.86%	2.095%
28	6.602	515	527	547	VV	1556	53803	8.19%	4.451%
29	6.664	547	549	560	VV 3	524	10692	1.63%	0.885%
30	6.711	560	565	567	VV 2	557	6791	1.03%	0.562%
31	6.721	567	568	575	VV 2	530	6697	1.02%	0.554%
32	6.789	575	592	607	VV	1412	51229	7.80%	4.238%
33	6.860	607	617	626	VV 2	732	20428	3.11%	1.690%
34	6.892	626	628	629	VV	556	2965	0.45%	0.245%
35	6.926	629	640	649	VV	899	25134	3.83%	2.079%
36	6.988	649	661	671	VV 2	1286	34378	5.24%	2.844%
37	7.051	671	683	696	VV	2052	52957	8.07%	4.381%
38	7.104	696	701	723	VV	577	14765	2.25%	1.222%
39	7.210	723	738	742	PV	718	13013	1.98%	1.077%
40	7.247	742	751	767	VV 2	807	19141	2.92%	1.584%
41	7.302	767	770	772	VV 2	35	171	0.03%	0.014%

Sum of corrected areas: 1208716

Signal : EIC Ion 473.00 (472.70 to 473.70): THC-PC2.D\data.ms

9

peak #	R.T. min	first scan	max scan	last scan	PK TY	peak height	corr. area	corr. % max.	% of total
1	5.129	3	15	26	BV	135	1699	0.70%	0.462%
2	5.345	75	91	105	PV	35	596	0.25%	0.162%
3	5.445	119	125	135	PV	60	770	0.32%	0.209%
4	5.511	135	148	160	VV 3	32	542	0.22%	0.147%
5	5.810	242	252	261	PV 2	32	506	0.21%	0.138%
6	6.076	330	344	351	PV 2	37	551	0.23%	0.150%
7	6.219	374	394	427	PV	13961	242950	100.00%	66.030%
8	6.318	427	428	430	VV	23	109	0.04%	0.030%
9	6.334	430	434	441	VV 3	26	306	0.13%	0.083%
10	6.708	554	564	576	VV 3	39	724	0.30%	0.197%
11	6.854	600	615	632	PV 2	76	1600	0.66%	0.435%
12	6.961	632	652	681	PV	5204	109041	44.88%	29.636%
13	7.057	681	685	692	VV	18	202	0.08%	0.055%
14	7.236	725	747	764	PV 2	348	8343	3.43%	2.268%

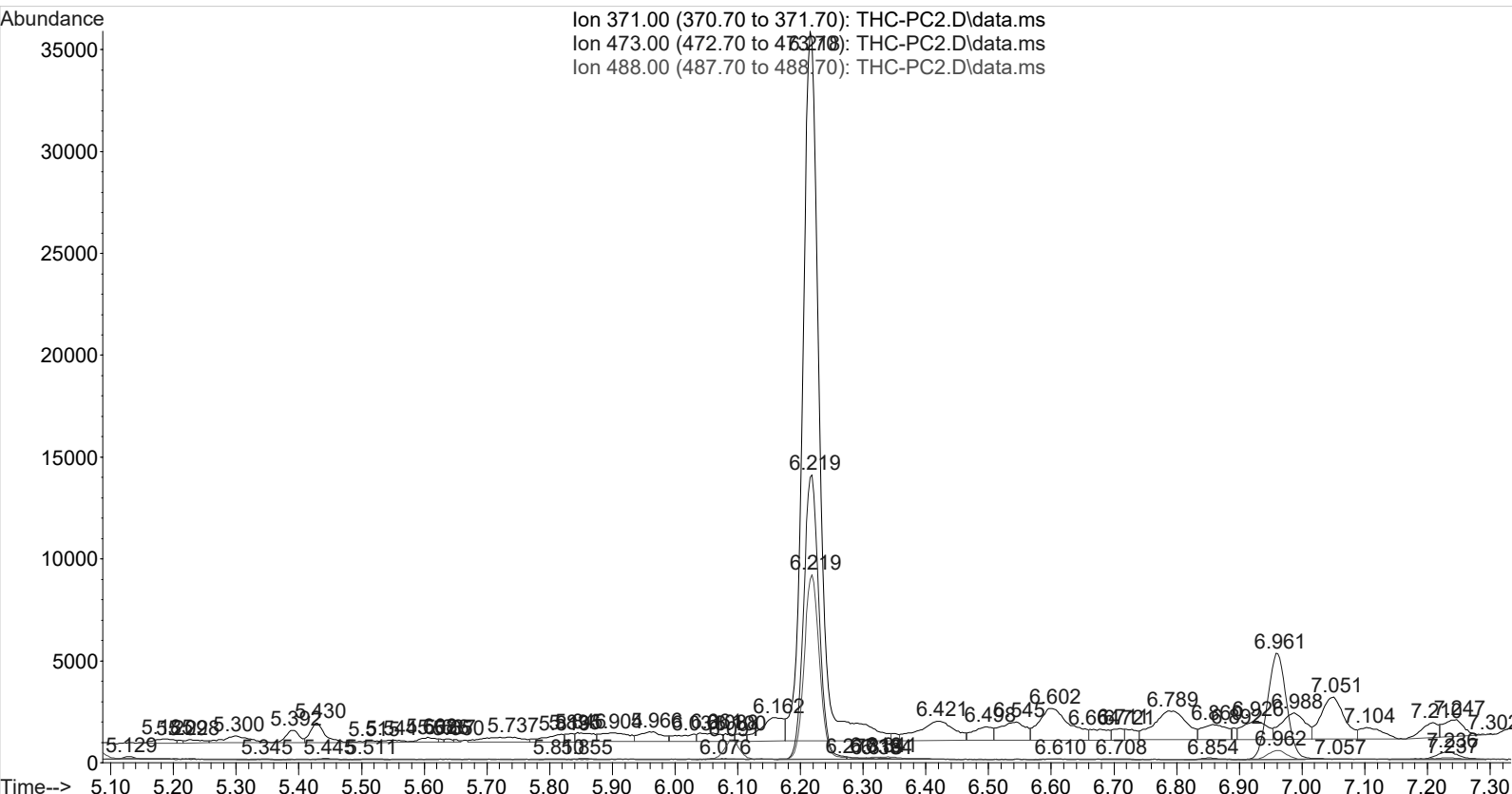
Sum of corrected areas: 367938

Signal : EIC Ion 488.00 (487.70 to 488.70): THC-PC2.D\data.ms

peak #	R.T. min	first scan	max scan	last scan	PK TY	peak height	corr. area	corr. % max.	% of total
1	5.855	261	268	275	VV 3	35	493	0.32%	0.263%
2	6.091	334	350	365	BV	910	15066	9.70%	8.042%
3	6.219	375	394	413	BV	9005	155262	100.00%	82.878%
4	6.277	413	414	424	VV	77	1137	0.73%	0.607%
5	6.316	424	428	432	VV	82	1059	0.68%	0.565%
6	6.341	432	437	460	VB 2	97	2084	1.34%	1.112%
7	6.610	517	530	532	PV	15	231	0.15%	0.123%
8	6.962	632	652	667	PV	439	9280	5.98%	4.954%
9	7.237	713	748	767	VV 2	80	2725	1.75%	1.454%

Sum of corrected areas: 187337

TOX.M Mon Jun 10 14:31:04 2019



Data Path : G:\TOX\Pocatello\MMS\CDS\2019\am 3 worklist 3453\
 Data File : THC-C3-reinject.D
 Acq On : 11 Jun 2019 08:25
 Operator : ISP\datastor
 Sample : Biorad C3 Control
 Misc : C3 Lot # 68460; Worklist 3453
 ALS Vial : 33 Sample Multiplier: 1

Integration Parameters: events.e
 Integrator: ChemStation

Method : C:\gcms\1\methods\TOX.M
 Title :

Signal : EIC Ion 371.00 (370.70 to 371.70): THC-C3-reinject.D\data.ms

peak #	R.T. min	first scan	max scan	last scan	PK TY	peak height	corr. area	corr. % max.	% of total
1	5.315	74	80	82	PV	52	348	0.15%	0.111%
2	5.329	82	85	97	VV 2	49	818	0.36%	0.261%
3	5.406	97	112	118	PV 2	66	1119	0.49%	0.357%
4	5.446	118	126	134	VV	247	3663	1.61%	1.168%
5	5.533	147	156	163	PV	152	2237	0.98%	0.713%
6	5.579	163	172	181	VV	181	3050	1.34%	0.973%
7	5.631	181	190	209	VV	183	3882	1.71%	1.238%
8	5.829	250	259	264	VV 3	41	624	0.27%	0.199%
9	5.920	280	290	293	PV	48	384	0.17%	0.122%
10	5.976	299	310	321	VV	158	2734	1.20%	0.872%
11	6.062	321	340	341	VV 2	88	1334	0.59%	0.425%
12	6.075	341	344	349	VV 2	94	1049	0.46%	0.334%
13	6.237	354	401	424	VV	12088	227654	100.00%	72.600%
14	6.313	424	427	445	VV 3	171	3926	1.72%	1.252%
15	6.421	445	465	482	VV 2	199	7562	3.32%	2.411%
16	6.515	492	497	500	VV 2	80	1010	0.44%	0.322%
17	6.563	500	514	523	VV 2	191	4933	2.17%	1.573%
18	6.616	523	532	557	VV	240	7968	3.50%	2.541%
19	6.740	566	575	578	VV 2	68	1177	0.52%	0.375%
20	6.814	586	601	614	VV	231	7304	3.21%	2.329%
21	6.880	614	624	627	VV 3	115	2287	1.00%	0.729%
22	6.894	627	629	635	VV 2	100	1248	0.55%	0.398%
23	6.942	635	645	657	VV 2	154	4332	1.90%	1.382%
24	7.005	657	667	677	VV 2	214	5342	2.35%	1.703%
25	7.065	677	688	704	VV	357	9483	4.17%	3.024%
26	7.127	704	710	729	VV 2	111	3009	1.32%	0.960%
27	7.262	733	756	772	VV	139	5095	2.24%	1.625%

Sum of corrected areas: 313572

Signal : EIC Ion 473.00 (472.70 to 473.70): THC-C3-reinject.D\data.ms

peak #	R.T. min	first scan	max scan	last scan	PK TY	peak height	corr. area	corr. % max.	% of total
1	5.535	143	157	166	PV	72	1087	1.31%	1.255%
2	6.238	368	401	421	BV	4745	82964	100.00%	95.795%
3	6.418	447	463	479	BV 3	55	914	1.10%	1.056%
4	6.577	508	519	532	VV 3	42	744	0.90%	0.859%
5	6.985	646	660	676	BV 2	43	897	1.08%	1.036%

Sum of corrected areas: 86606

Signal : EIC Ion 488.00 (487.70 to 488.70): THC-C3-reinject.D\data.ms

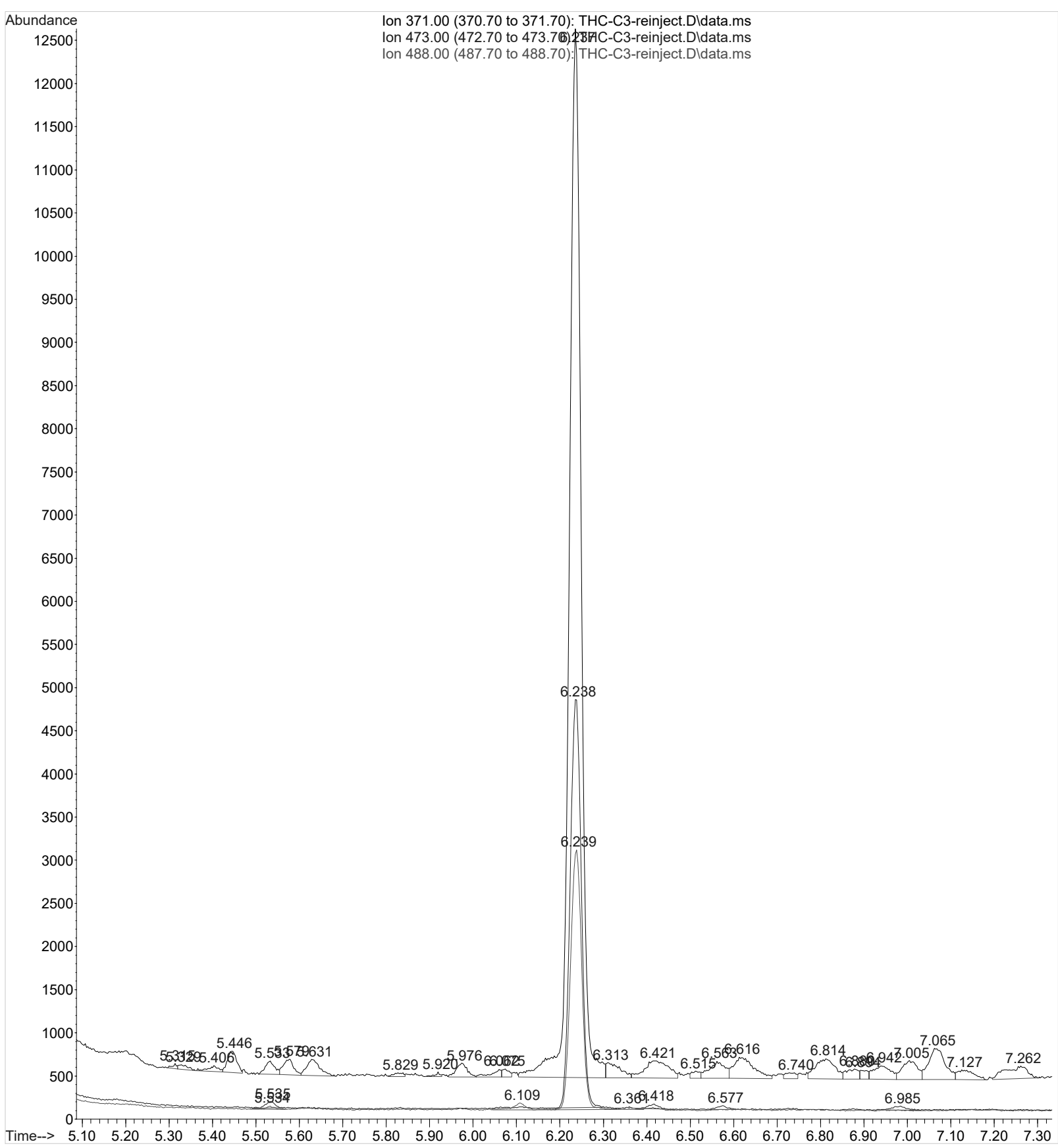
peak #	R.T. min	first scan	max scan	last scan	PK TY	peak height	corr. area	corr. % max.	% of total
--------	----------	------------	----------	-----------	-------	-------------	------------	--------------	------------

1	5.534	140	156	169	PB	36	553	1.03%	0.984%
2	6.109	333	356	367	VV 3	80	1645	3.07%	2.928%
3	6.239	367	401	433	PV	2999	53605	100.00%	95.400%
4	6.361	433	444	455	VV 3	28	387	0.72%	0.688%

CS

Sum of corrected areas: 56190

TOX.M Tue Jun 11 08:35:16 2019



AM 3 carboxy-THC Calculations Sheet

Run Date: 6/7/2019

Worklist #: 3453

Laboratory Case #: BioRad C3 Lot: 68640

Case Calculations:

EIC Ion 371 Corr. Area: 227654

EIC Ion 473 Corr. Area: 82964

EIC Ion 488 Corr. Area: 53605

473:371 Ratio: **0.364**

488:371 Ratio: **0.235**

Quality Control Calculations:

1st Control

2nd Control

EIC Ion 371 Corr. Area: 304105

656600

EIC Ion 473 Corr. Area: 99699

242950

EIC Ion 488 Corr. Area: 61409

155262

Ratio of 473:371: 0.328

0.370

Average: 0.349

Ratio of 488:371: 0.202

0.236

Average: 0.219

Acceptable Retention Time Range: 6.120

to 6.318

Approximate Minimum Corrected Area of 371 Ion: 60821

Acceptable 473:371 Ratio Range: 0.279

to 0.419

Acceptable 488:371 Ratio Range: 0.175

to 0.263